



## Available Modules

Sage MAS 500 ERP is a highly reliable, robust, and integrated series of enterprise applications covering all areas of business, including financials, distribution, customer relationship management (CRM), manufacturing, human resources, payroll, project accounting, financial reporting, electronic commerce, and more.

The products are designed exclusively for growing companies and leverage Microsoft tools, technology, and architecture to provide a flexible, scalable, and full-featured enterprise management solution.

Sage MAS 500 offers market-leading functionality in a variety of areas. Its distribution capabilities are extensive, supporting multiple warehouses, forecasting, and automated procurement. The outstanding manufacturing capabilities include routings, bills of material, work orders, MRP, scheduling, job costing, and labor reporting. An out-of-the-box customer self-service application gets businesses up and running quickly with an integrated, powerful Web site for order taking and account inquiries.

In addition, the Sage MAS 500 design integrates with other applications, including Web sites and e-commerce applications, allowing customers to fully support their e-business plans with Sage MAS 500. These strengths combine with many others to provide a complete accounting and business solution.

## SOLUTIONS

Financials

Project Accounting

Distribution

Manufacturing

CRM

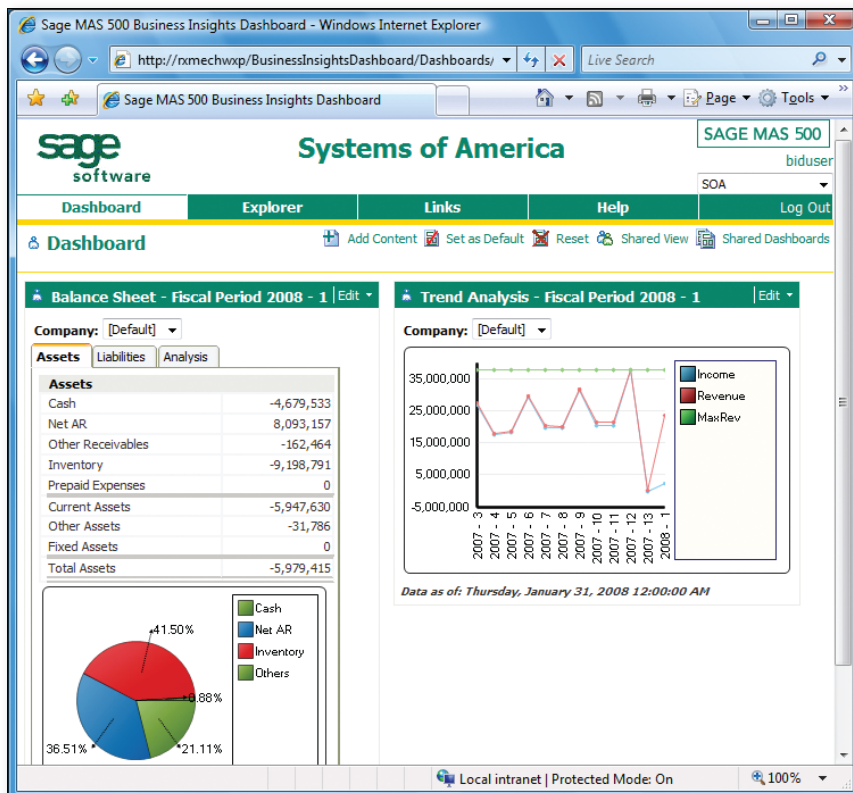
E-business

HR

Payroll

Business Intelligence and Reporting

Customization and Integration



Business Insights Dashboard uses .NET technology to instantly give you a comprehensive view of critical business information that can be customized for each user's preference.

*"Sage MAS 500 has allowed us to boldly go where we never thought we could. It has increased our productivity by 100 percent, saved us the work of two data entry people, and made us so successful that we've had to hire three new sales account executives. And these are just the gains we've seen in our first nine months."*

*Chris Holmes, Director of IT - Decipher, Inc.*

## Financials

Sage MAS 500 offers deep financial functionality and superior usability. Integration of multiple processes, easy access, data error reduction and streamlined customization are only a few of the benefits of Sage MAS 500 financial software. Integration with Microsoft Office and the Internet, combined with its exclusive optimization for the Windows and SQL Server platform, makes it an ideal solution for the ever-changing needs of today's growing businesses. The Sage MAS 500 Financials include: General Ledger, Accounts Receivable, Accounts Payable, Purchase Order, Multicurrency Management, Cash Management, FAS Asset Accounting, FAS Asset Inventory, Allocations, and Financial Reporting.

These modules can improve your cash flow, customer satisfaction, and access to up-to-the-minute data. They also offer a way to streamline your accounting processes, save time, increase the integrity of your data, and provide the means for instant analysis and presentation-quality reporting on a host of important issues that affect your decision-making and profitability. The modules provide extensive benefits and are fully integrated with the other Sage MAS 500 solutions.

## Project Accounting

Effective project management enables professional services firms and corporate IT departments to achieve operational excellence through the unique ability to control people, projects, and budgets with exceptional flexibility. The result helps generate more revenue at a lower cost, eliminate wasted hours, and produces more bottom-line savings.

The Sage MAS 500 Project Accounting module allows project managers to optimize project profitability. Project managers can track actual vs. estimated costs through forecast completion, which helps prevent cost overruns and generates bottom-line savings. Project Accounting also integrates Microsoft Project Link, providing managers and finance departments an end-to-end project management solution. The Sage TimeSheet module is a browser-based time and expense entry and project cost management module that connects a remote workforce through the Internet in real-time.

## Distribution

In today's distribution environment, many factors can jeopardize your profitability. Optimizing inventory levels can mean the difference between improving profits and going out of business. The Sage MAS 500 Distribution solution is an integrated series of modules designed to give you everything you need to control your inventory levels—and their effect on your profits. Incorporating Inventory Management, Inventory Replenishment, Warehouse Management, Warehouse Automation, Sales Order, Purchase Order, eOrder, eCustomer, and Advanced Kitting modules, you can customize your software system to fit your specific requirements. Accurately forecasting and managing for every eventuality, the Distribution solution is ideal for distributors with multiple warehouses in a variety of industries.

Designed by distribution experts, Distribution can ensure on-time delivery to your important customers, maximize your productivity, and deliver advanced capabilities for tracking, managing, and replenishing inventory throughout the entire distribution cycle—from automated purchasing to stocking, all the way through to sales. With an eye on improving your profitability, the system helps you reduce carrying costs, maximize cash flow, and enables you to buy smarter.

## Manufacturing

The Sage MAS 500 Manufacturing solution was designed with the flexibility and expanded capabilities to handle unique business requirements for various industries, including metal fabrication, machine and equipment manufacturing, electronic or electric equipment assembly, high-tech products, stamping, injection molding, furniture and fixture production, wood products manufacturing, and more.

Fully integrated modules can help you optimize your processes and secure your profit margin by tying manufacturing data back to the core financial modules that serve as the base of the Sage MAS 500 system. Manufacturing modules consist of Advanced Manufacturing, Light Manufacturing, Material Requirements Planning (MRP), Estimating, Engineering Change Management, Shop Floor Control, Advanced Planning and Scheduling, Product Configurator, and Project Management.

The manufacturing solution offers streamlined integration of routings and bills of material, which enable improved lead time calculations, more accurate material plans, and better resource allocation. The solution gives a real-time business snapshot, a critical competitive advantage that provides manufacturers with the ability to ship more products on time to their customers, making it the clear choice for manufacturing management.

## HR and Payroll

Sage Abra HR and Payroll delivers a powerful, yet flexible, enterprise-wide HR solution for managing employee and business relationships, and overseeing the processes related to government compliance requirements and certifications.

*"Sage MAS 500 is an excellent product with great functionality. All the modules integrate in a logical progression that makes a lot of sense to an accounting professional."*

*Shawn Burke, Assistant Controller – Captivate Network, Inc.*

The modules offered include Abra HR, Abra Payroll, and Abra Attendance, which smoothly integrate HR and payroll information with the many facets of your business operations.

### CRM

Sage SalesLogix for Sage MAS 500 provides the tools to better understand your customer, close more deals, and help you profit from the relationship. By giving complete customer information to sales and support people, requests and leads from customers are managed effectively and accurately. By automating key activities, providing essential analytical tools, streamlining your company's communications, and managing intelligence, you can attain new levels of efficiency with benefits that range from improved employee teamwork and more satisfied customers to a shorter sales cycle, more sales revenue, and higher profitability. The Sage SalesLogix modules offered include: Sales, Marketing, Support, and Customer Service.

### Business Intelligence and Reporting

Sage MAS 500 provides other valuable system components that can offer substantial benefits in running your business by enabling you to monitor key performance indicators efficiently and effectively. Alerts can solve problems before they start and help you satisfy your

customers far more consistently. Sage MAS 500 Alerts automatically send early warning e-mail notifications to you and your specified personnel announcing critical events in your Sage MAS 500 system, including credit holds, inventory thresholds, priority client transactions, urgency levels, and more.

The Business Insights Dashboard module is included as standard with Sage MAS 500, and offers busy executives a customizable, Web-based, real-time overview of vital business operations as well as user-defined key performance indicators. Using the data available in Sage MAS 500, your firm's senior staff can make better business-critical decisions in any environment with up-to-the-minute information.

Business Insights Explorer is one of the most convenient ways to keep up to date with current data on your sales, customers, inventory, projects, and other critical information. It brings ad hoc inquiry, drill-down, and drill-around analysis up to a whole new level. Turn your data into knowledge that you can act on by using powerful sorting, grouping, and filtering capabilities that you personalize to your specific needs and role within your company. Users also have the ability to export the detailed information displayed in Business Insights Explorer directly to an Excel or Word template for additional report formatting, mail merging, and analysis.

Business Insights Analyzer can help you make better business decisions by providing you with insights into your business data. Business Insights Analyzer is an intuitive, easy-to-use analytics tool included with Sage MAS 500. Information is provided in a logical grid format with powerful filtering, grouping, and sorting capabilities that let you organize the data in the way most appropriate to the task at hand. You also have the added flexibility of analyzing each view using the included Excel pivot tables and charts.

The screenshot displays the 'Explore - Customers' window in Sage MAS 500. The interface includes a menu bar (File, Edit, View, Preview, Drill Into, Analyze, Manage, Insights, Tools, Window, Help) and a toolbar with various icons. A left-hand pane shows a tree view with 'Sales History', 'Standard', 'Salesperson History', and 'Customer Sales History'. The main area is divided into two sections: 'Customers' and 'Open Orders'.

**Customers Table:**

Cust	Customer	Credit Limit	Balance	Highest Bal	Highest Bal Date	Avg Da
Aldebrn	Aldebaran, Inc.	10,000,000.00	80,989.35	14,316,137.94	3/1/2008	
AlGar	Alicia Garage Doors	0.0	226,328.46	2,080,744.83	3/1/2008	
bid	Business Insights Dashboard	100,000.00	94,405,121.66	94,406,415.66	6/30/2008	
BlackWel	Blackwell Emulsion Co.	0.0	112,029.75	203,724.50	3/1/2008	
Col&Sons	Collier & Sons, Inc.	0.0	65,031.43	65,031.43	6/12/2008	
CompSol	Compound Solutions	0.0	2,986,283.78	8,087,651.84	3/1/2008	
DawsComp	Dawson Computer Products	0.0	103,264.75	5,986,955.47	3/1/2008	
FounFlow	Fountain Valley Florists	0.0	12,753.38	294,806.93	3/1/2008	
Gros,Mic	Michael Grossman, MD	0.0	16,682.28	134,775.03	3/1/2008	
Unltd cons	Unltd cons	20,000.00	24,616.63	66,181.43	3/1/2008	

**Open Orders Table:**

Sales Order	SO Amt	SO Date	Status	Customer	Slsprsn	Open Amt	Cr Hold	Hold	Hold Reason
SO-0000000271	153.21	6/5/2008	Open	Aldebaran, Inc.	Alfred	157.99			
SO-0000000269	1,172.10	6/5/2008	Open	Aldebaran, Inc.	Alfred	1,215.97			
SO-0000000254	2,655.85	6/5/2008	Open	Aldebaran, Inc.	Alfred	2,950.94			
SO-0000000251	19,942.53	6/5/2008	Open	Aldebaran, Inc.	Alfred	10,612.90			
SO-0000000246	10,800.00	6/12/2008	Open	Aldebaran, Inc.	Alfred	12,000.00			
SO-0000000245	29,700.00	6/12/2008	Open	Aldebaran, Inc.	Alfred	33,000.00			
SO-0000000244	32,400.00	6/12/2008	Open	Aldebaran, Inc.	Alfred	36,000.00			
SO-0000000238	195.30	4/18/2008	Open	Aldebaran, Inc.	Alfred	200.00			
SO-0000000046	623,221.02	3/17/2008	Open	Aldebaran, Inc.	Alfred	574,297.25			

◀ *With just a few clicks, Business Insights Explorer delivers quick and easy data inquiries, answers to "what if" scenarios, and last-minute must-have executive requests.*

### Customization

The Customizer module gives even novice programmers the ability to easily modify screens and forms to match your specific business processes, look, and feel, and improve staff productivity without making changes to the source code. The Sage MAS 500 SDK provides faster development at lower costs through Visual Basic controls, wizards, and utilities that solve housekeeping issues, including concurrency, user interface, security models, and data handling. Module Source Code is available for purchase with the SDK, and allows more complex enhancements and changes to be made.

### Implementation Tools

Sage MAS 500 dramatically reduces implementation costs by providing an organized workflow of the steps required to configure the system combined with tools to facilitate the migration of data from your previous system. The configuration steps can be assigned to any user and integrated into Microsoft Outlook. At each step, you can select whether to import data using powerful import utilities, load it from a spreadsheet, or copy information from an existing Sage MAS 500 company. Whatever your choice, the legacy data is validated as it is loaded into the system, ensuring the migration is smooth and complete.

Customers upgrading from Sage MAS 90 and Sage MAS 200 ERP systems have the added advantage of product-specific help for each migration step. The help information explains the differences between the two systems in terminology and functionality, assisting the customer in their understanding of the new system.

Sage MAS 90 and 200 customers can utilize the Data Import Manager to easily import data into Sage MAS 500. The Data Import Manager provides a powerful mapping wizard that can also import data from ASCII, Delimited, Microsoft Access, Excel, SQL Server and XML data sources.

Overall, Sage MAS 500 lowers the burden of switching enterprise systems, enabling customers to focus their resources on the important task of leveraging Sage MAS 500 features as effectively as possible.

### Financials

- General Ledger
- Accounts Receivable
- Accounts Payable
- Allocations
- Cash Management
- FAS Asset Accounting
- FAS Asset Inventory
- Multicurrency Management

### Project Accounting

- Project Accounting
- Sage TimeSheet
- Microsoft Project Link

### Manufacturing

- Light Manufacturing
- Advanced Manufacturing
- Advanced Planning & Scheduling
- Engineering Change Management
- Estimating
- Project Management
- Material Requirements Planning
- Product Configurator
- Shop Floor Control

### Customization

- SDK
- Customizer
- Source Code
- Data Import Manager

### Business Intelligence & Reporting

- Alerts
- Business Insights Dashboard
- Business Insights Explorer
- Business Insights Analyzer
- Crystal Reports®

### Distribution

- Inventory Management
- Inventory Replenishment
- Purchase Order
- Sales Order
- eCustomer
- eOrder
- Warehouse Management
- Warehouse Automation
- Shipment Management
- Sales Tax
- RMA
- Advanced Kitting

### HR & Payroll

- Abra Attendance
- Abra HR
- Abra Payroll

### CRM

- Sage SalesLogix Sales
- Sage SalesLogix Support
- Sage SalesLogix Customer Service
- Sage SalesLogix Marketing



End-to-end solutions. Expert advice.  
Ongoing support. That's Sage 360°.

Sage Software supports the needs, challenges, and dreams of 2.8 million small and mid-sized business customers in North America through easy-to-use, scalable and customizable software and services. Sage Software is a subsidiary of The Sage Group plc, a leading international supplier of business management software and services formed in 1981 and listed on the London Stock Exchange since 1989.

**sage**  
software  
*Your business in mind.*

©2008 Sage Software, Inc. All rights reserved. Sage Software, Sage Software logos and the Sage Software product and service names mentioned herein are registered trademarks or trademarks of Sage Software, Inc., or its affiliated entities. All other trademarks are the property of their respective owners. 5ENT051 05/08 08-08381