



Implementation

Congratulations on your decision to invest in your company's future by upgrading your system to a Sage MAS 500 ERP-class application. Sage MAS 500 provides secure, efficient, and powerful implementation utilities to ensure that you'll have everything you need to begin operating your new software immediately.

As is characteristic of all Sage Software applications, the Sage MAS 500 implementation tools have been created with maximum flexibility for optimal functionality. Data Import Manager puts you on the fast track to conversion and implementation. Built with .NET and SQL Server technology, this robust database integration tool lets you use a powerful mapping wizard to import data directly from sources such as Microsoft Access, Excel, SQL Server, XML, and more. If you regularly perform imports from a custom software package, Data Import Manager jobs can be scheduled to run on a regular basis. Advanced features allow developers to add scripting for additional validations and other complex transformations.

Data Migrator and Data Porter both use Excel to rapidly enter and validate your legacy data. Data copy facilitates data conversion across companies that work with the same records. Data creation provides the flexibility for new record generation during conversion and company structure changes. The implementation guide and best practices project plans ensure that everyone is working as a team and that your system will be up and running with Sage MAS 500 quickly.

As intuitive as they are powerful, the import tools of Sage MAS 500 empower users to cost-effectively and successfully facilitate their own conversions. Sage Software gives you the tools you need to manage data migration and conversion with insight. With a little strategic planning and Sage MAS 500, you'll have an intelligent data foundation as a springboard for your company's future success.

SAGE MAS 500 SOLUTIONS

Financials and Project Accounting

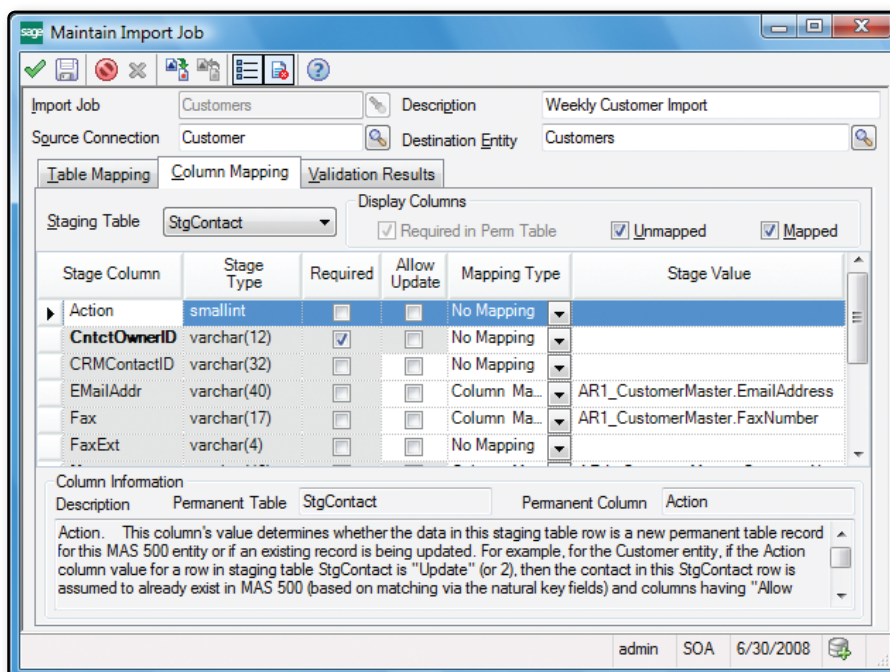
Distribution and Manufacturing

CRM and E-business

Human Resources and Payroll

Customization and Integration

Business Intelligence

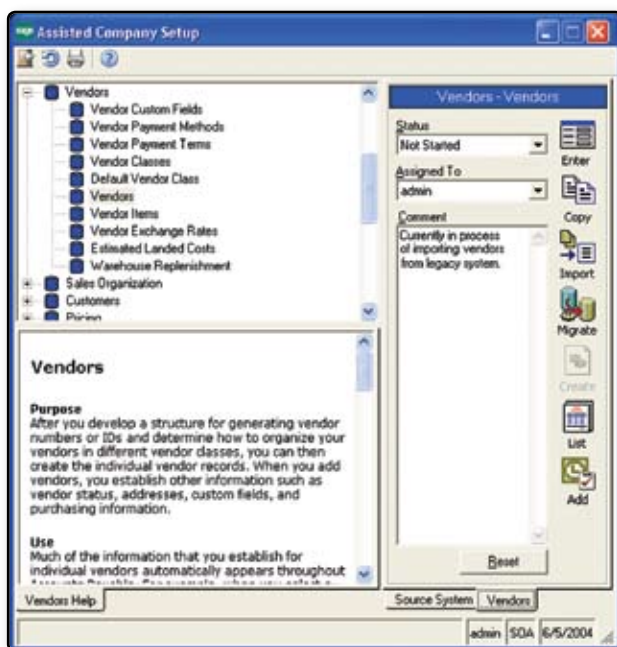


Existing data can be imported into Sage MAS 500 easily and accurately using Data Import Manager.

Implementation with Insight

Assisted Company Setup (ACS)

- Offers flexible data setup options
- Accommodates various data entry, copy, or import methods
- Ensures data is created in correct sequence
- Shows the purpose and use of each data element
- Assigns steps to Sage MAS 500 system users
- Creates each setup step as a Microsoft Outlook task
- Tracks progress with status reports



▲ ACS guides you through the required setup steps required and provides you with the available data migration tools for each step.

Copy Utilities

- Standardizes data across multiple companies
- Used on any size data set
- Used primarily for data conversion
- Ideal where records are the same across companies

Create Utilities

- Generates new records
- Used during conversion or when company structure changes
- Allows users to assign default values

Data Migrator

- Validates and inserts data from any system
- Leverages programmatic interfaces to rapidly insert data
- Creates error log where failed records can be easily fixed and re-run
- Imports medium to large sets of data
- Extracts data from Sage MAS 90 and 200 systems, converts it to Sage MAS 500 standards, and inputs it into Sage MAS 500
- Includes Sage MAS 90 and 200 help to explain data and usage differences

DataPorter

- Imports small to medium-sized data sets
- Used for data conversion or data entry
- Requires no database knowledge
- Performs data validation in real time
- Easy to use
- Supported in most screens

Data Import Manager

- Powerful mapping wizard simplifies imports
- Import transactions or entities into most accounting, inventory, and manufacturing modules
- Import data from ASCII, Delimited, Microsoft Access, Excel, SQL Server and XML data sources
- Schedule import jobs to be run one-time or on a regular basis

Implementation Guide

- Outlines the system conversion process
- Creates expectations of the role and responsibilities of everyone involved in the implementation
- Highlights system tools and resources for on-time, on-budget implementation

Implementation Plan

- Provides a step-by-step Microsoft Project plan
- Outlines the steps required to set up a new Sage MAS 500 system
- Standardizes project management practices



End-to-end solutions. Expert advice.
Ongoing support. That's Sage 360®.

Sage Software supports the needs, challenges and dreams of nearly 2.9 million small and medium-sized business customers in North America through easy-to-use, scalable and customizable software and services. Our products support accounting, operations, customer relationship management, human resources, time tracking, merchant services and the specialized needs of the construction, distribution, healthcare, manufacturing, nonprofit and real estate industries. Sage Software is a subsidiary of The Sage Group plc, a leading global supplier of business management software and services to small and medium-sized businesses. Formed in 1981, Sage was floated on the London Stock Exchange in 1989.

sage
software
Your business in mind.

©2008 Sage Software, Inc. All rights reserved. Sage Software, Sage Software logos and the Sage Software product and service names mentioned herein are registered trademarks or trademarks of Sage Software, Inc., or its affiliated entities. UPS, the UPS brandmark and the Color Brown are trademarks of United Parcel Service of America, Inc. All other trademarks are the property of their respective owners. 5ENT064 06/08 08-11283