



Data Import Manager

With the Data Import Manager, you no longer need to perform software “gymnastics” to get the information you need. By leveraging Sage MAS 500 ERP’s strong tradition as an open ERP platform, the Data Import Manager lets you easily import data from other applications on a one-time or recurring basis.

If you perform imports from a specialized software package, you’ll find you can use Data Import Manager to make the transfer virtually seamless. Importing data using Data Import Manager is a simple process. Built with .NET and SQL Server SSIS technology, this robust database mapping tool includes a simple graphical interface that lets you map data fields and import data directly from sources such as Microsoft Access, Excel, SQL Server, XML and more.

Yet, the power of the Data Import Manager lies in its additional data controls. For example, if you need to keep your Sage MAS 500 master file synchronized with a prospect database, you can set the import to run automatically every day, every hour, or every minute. You can chain imports together, so that an invoice import automatically follows a customer import. By leveraging the power of database scripting and SQL Server SSIS you can even instruct the program to run a script file automatically before the import, upon successful completion of an import, or after an error occurs. Records with errors are identified and can be corrected and re-run later.

BENEFITS

Import entity or transaction information from a wide variety of formats

Built-in defaults for required fields with ability to override

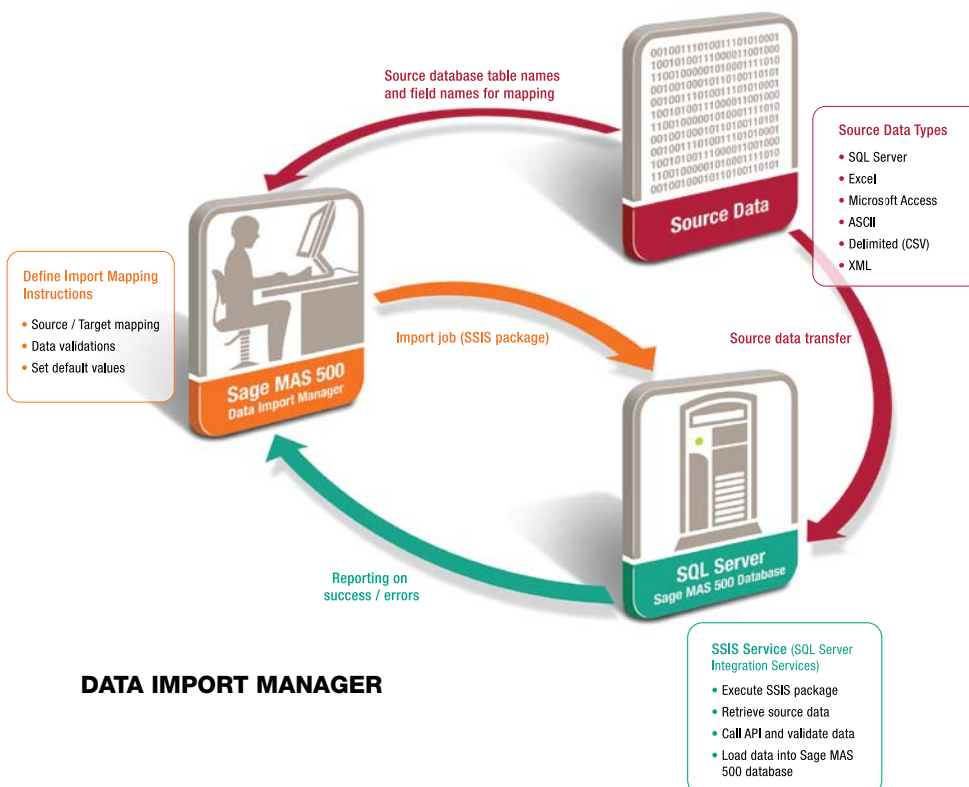
Wizard-based interface for simplified data mapping

Automated error reporting for invalid data ensuring referential integrity

Ability for novice users to run import jobs created by database experts

Run imports one time or schedule to run on a regular basis

Security to control user access to pre-defined import job



IMPORT DATA TYPES

SQL Server

ASCII Files

Delimited (CSV)

Microsoft Access

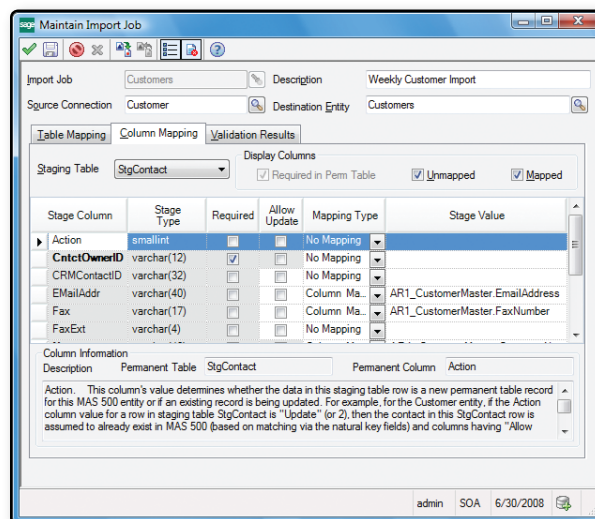
Microsoft Excel

XML

DATA IMPORT MANAGER

FEATURES

Mapping Wizard	Configure database imports using a powerful mapping wizard that provides detailed knowledge of the Sage MAS 500 database including required fields, default validations, lookups, and user-defined fields.
Scheduling	By leveraging SQL Server's SSIS technology, import jobs can be scheduled to run on a regular basis with a complete audit trail should errors occur during the import process.
Optionally Perform Subroutines	Run additional commands, scripts, or other functions based on three events: before job start, on job success, or on job failure. Subroutines also can be added before and after each record write and before and after assigning data fields.
SQL Server Connectivity	Link multiple SQL Server tables together, and point and click to select fields for importing. SQL Server's SSIS technology will then automatically generate the SQL statement for import or export, and Data Import Manager permits editing of the SQL statement for advanced users.
Data Validation	Validation logic is built into Data Import Manager to assure that the data being imported conforms to Sage MAS 500 rules. Validations performed by Data Import Manager are automatically listed and may be removed if not required for the import. New validations also may be created for specialized requirements (for example, do not permit import of future-dated invoices).
Security	Security can be granted for either execution or editing purposes providing even the most novice user with the ability to run regular imports.
Chaining of Jobs	Jobs can be set to run in sequence (for example, import invoices immediately following a customer import).
Advanced Data Controls	Skip or select records based on standard logic criteria (such as AND, OR). Conditional logic allows a field to be assigned based on the value of another field. For example, the sales tax code can be assigned based on the customer address.
Job Definition Export	Jobs can easily be prepared for transporting to another computer at a remote location.
Preview Option	The Test button permits easy viewing of sample data. You also can sample an entire file and print or display import log statistics (number of records imported, and more).



◀ A powerful mapping wizard provides detailed knowledge of the Sage MAS 500 database, so you can easily and accurately configure database imports.



End-to-end solutions. Expert advice.
Ongoing support. That's Sage 360®.

Sage Software supports the needs, challenges and dreams of nearly 2.9 million small and medium-sized business customers in North America through easy-to-use, scalable and customizable software and services. Our products support accounting, operations, customer relationship management, human resources, time tracking, merchant services and the specialized needs of the construction, distribution, healthcare, manufacturing, nonprofit and real estate industries. Sage Software is a subsidiary of The Sage Group plc, a leading global supplier of business management software and services to small and medium-sized businesses. Formed in 1981, Sage was floated on the London Stock Exchange in 1989.

sage
software
Your business in mind.

©2008 Sage Software, Inc. All rights reserved. Sage Software, Sage Software logos and the Sage Software product and service names mentioned herein are registered trademarks or trademarks of Sage Software, Inc., or its affiliated entities. All other trademarks are the property of their respective owners.
5ENT142 06/08 08-06822